

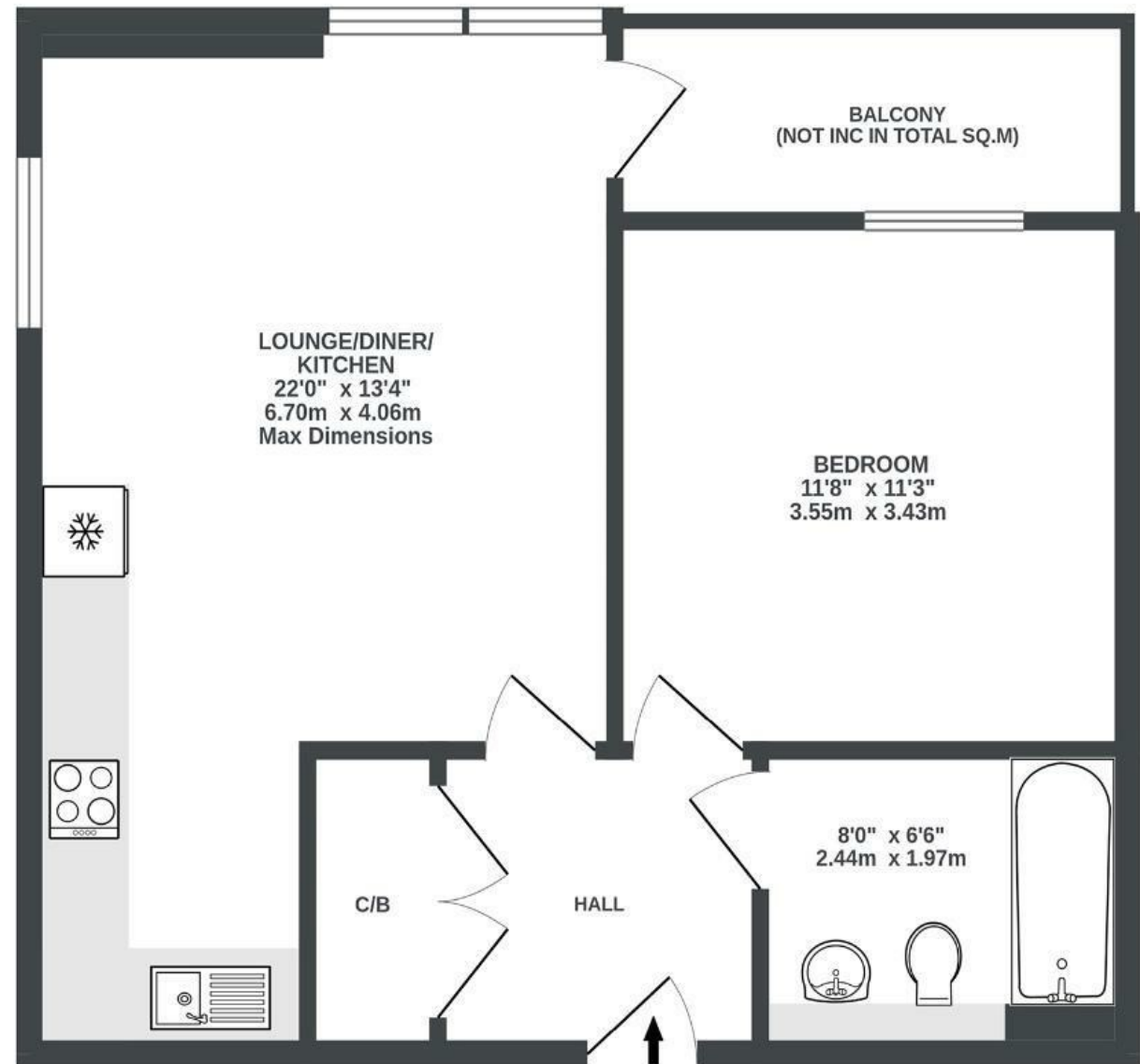
Kings Quarter Apartments

STOKES CROFT

APPROXIMATE FLOOR AREA
45.9 SQM / 494 SQFT



THIRD FLOOR
494 sq.ft. (45.9 sq.m.) approx.



Illustrations are for reference purposes only, measurements are approximate, not to scale.

Boardwalk

15 King Square , BRISTOL

£

£254,000



BS2 8HP

z z z

1 Bedrooms



1 Bathrooms

"The flat was the perfect first home for me, walkable distance to see friends in all parts of the city and close to some of the best bars, restaurants and shopping. Many nights have been spent playing cards and drinking pints at the Hillgrove in Kingsdown, followed by a short stroll through Kings Square for a takeaway from Veit Kitchen, or heading to the Cube Microplex to discover a new indie film. Whilst in the centre of the action the flat has always felt peaceful and with the windows letting in enough light for even me to grow impressive houseplants, it's become my city centre oasis, and I will sorely miss it."

